

DISCOVER OUR
SELECTION OF
UNIQUE AND
AMAZING
PRODUCTS.



vino bellezza



"Each glass of wine has a meaning: one is for good health, the second is for love and pleasure, the third is for sleep, and the fourth leads to anger and violence."

Dionysus, God of Wine







Vino Bellezza means 'beautiful wine' in Italian. What makes wine beautiful?

While all wine lovers surely have a different answer to this question, everyone will agree that once wine is produced, it needs to be stored under specific conditions to preserve its beauty and quality.

Wine is considered to be a living drink as it continues to mature in the barrel and, subsequently, in the bottle. That is why wine needs to be stored in an undisturbed place with a constant temperature and ideal humidity without any direct exposure to sunlight or bright lights.

Not all wine lovers have access to such an environment - one that only a cellar can provide naturally. That's where Vino Bellezza wine coolers come to the rescue.

Vino Bellezza's story began in 2016 when Öztaş Iron & Steel Co. entered the commercial cooler market, building on its ever-growing refrigeration know-how dating back to 1980. Vino Bellezza wine coolers are the end product of its ongoing R&D efforts since then.

Offering a range of benefits, Vino Bellezza wine coolers are available in three different lines. Vino Bellezza wine coolers are set to become the new choice of wine lovers thanks to their high performance, easy-to-use features, ergonomic and sleek design and, most importantly, accessible prices. Whether for your kitchen, living room, office or boat, we've got a Vino Bellezza to suit all needs.

UV PROTECTION GLASS

Exposure to sunlight or other bright forms of light speeds up the ageing process of wine, which can spoil its taste. All Vino Bellezza wine coolers feature special UV protection glass doors. UV protection is enabled through tinted double-pane glasses with LOW-E coating. The double-pane glass is filled with argon gas which reflects almost all of the harmful UV rays back, protecting the wines from the adverse effects of light.





LED LIGHTING

Vino Bellezza wine coolers are equipped with LED lighting. The LED light spectrum does not give off UV rays. This makes it possible to illuminate the interior of the cooler uniformly for a long period of time without any harm to the wines. The LED lighting can be left on all the time, dimmed or turned off with a single switch.

IDEAL TEMPERATURE IN ALL CONDITIONS

To preserve the quality of wine, storing it at the right temperature is a must. In general, the ideal storage temperature for all wines is between +5 °C and +14 °C. Another key requisite for storing wine is to keep the temperature as stable as possible. In particular, the serving temperature plays a key role in the taste and pleasure you get out of wine. Vino Bellezza wine coolers are equipped with a display panel that allows you to control the temperature. The temperature inside the cooler is adjusted electronically. The stainless steel accents are designed to ensure ideal storage temperature. LED lights generate a very small and negligible amount of heat therefore allowing the lights to be left on for long durations without heating the bottles.





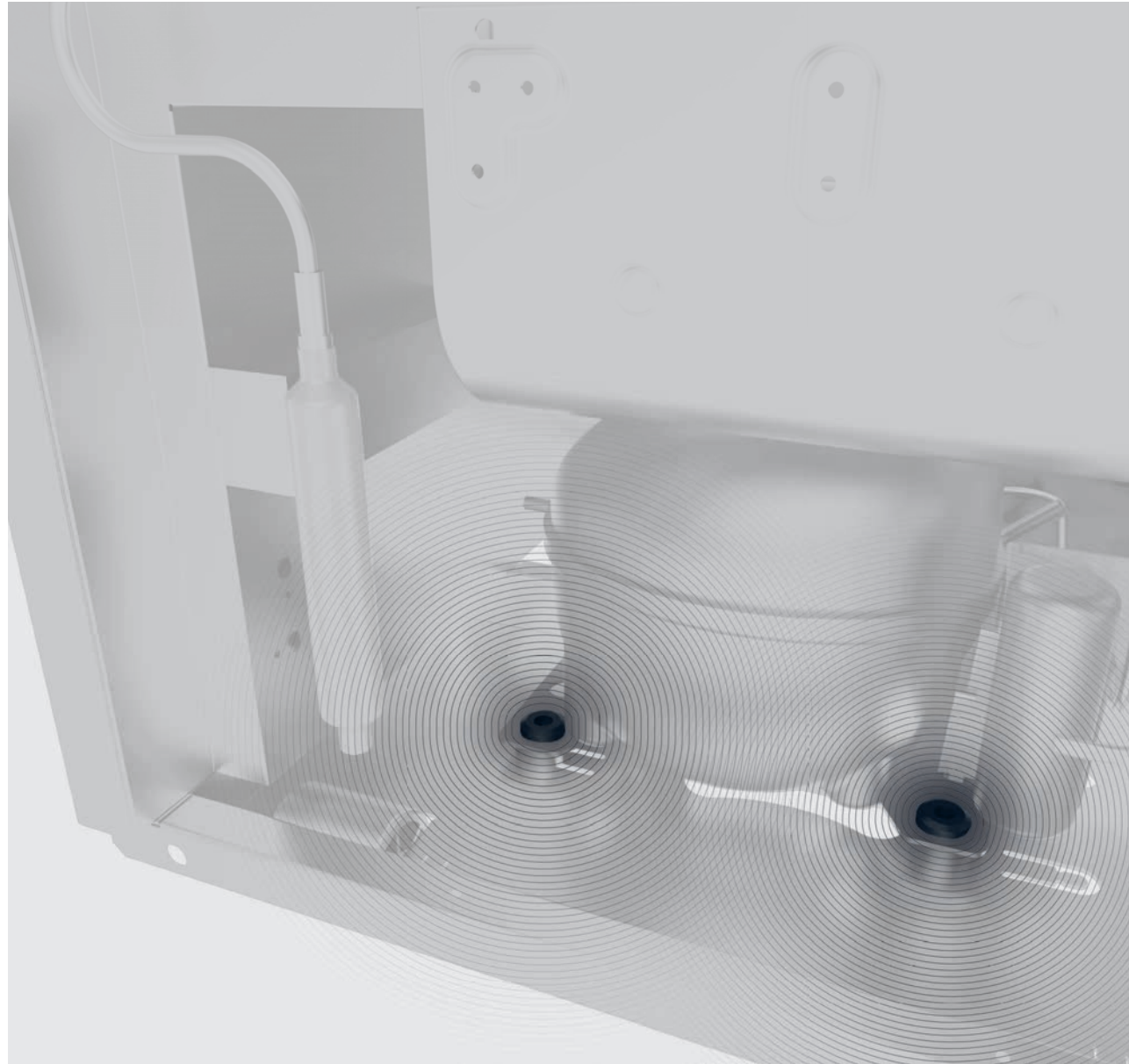
HORNBEAM (CARPINUS) SHELVES

Wine is generally stored horizontally to keep the cork moist and prevent spoilage. Wine should be stored on hardwood shelves when stored for long periods as metal shelves can lead to adverse effects such as condensation. All Vino Bellezza wine coolers come with five shelves made from sturdy Russian pine wood. These natural wood shelves are designed to perfectly accommodate Bordeaux bottles. The shelves are adjustable in height, allowing maximum capacity usage when bottles are fitted opposite each other. Additional wood shelves can be purchased as an accessory.

VIBRATION REDUCTION

Vibration is another key component for storing wine for a long period of time. Wine exposed to vibrations will lead to sedimentation, which can spoil both its taste and appearance. In order to preserve the wine's taste and drinking quality, it needs to be stored undisturbed as much as possible.

Vino Bellezza wine coolers feature special rubber vibration dampers on the compressor that enables chilling. The gas is cooled with static condensers therefore eliminating the use of fan motors that cause vibrations. This system not only prevents vibrations but also saves a significant amount of energy.





STEEL INTERIOR AND STAINLESS STEEL ACCENTS

As its name suggests, the Vino Bellezza Vintage line features timeless products that get better with age. The Vintage wine coolers are designed for wine lovers who are newcomers to the enchanting world of wines. If you treat yourself to around 10 bottles of wine a month, then the Vintage line is just for you. The Vintage series boasts the full range of Vino Bellezza wine cooler features from UV protection glass doors, a digital thermostat, control panel, and natural pine wood shelving. The interiors are made from double-coated galvanized metal resistant to corrosion.

14
DIGITAL DISPLAY



Power Button



Light Control



Temperature Down



Temperature Up



WHITE WINE

5 1/2 oz | 165 ml | 16.5 cl

White wines should be served cold (+5 °C). This is why glasses with long stems were created so as to prevent any heat transmission from the hands to the wine.





RED WINE

6 1/2 oz | 195 ml | 19.5 cl

The serving temperature for red wines is between +10 °C and +14 °C. For full-bodied red wines, the temperature should be between +14 °C and +18 °C.

A red wine glass should be filled only one-third full. Red wine glasses are larger than white wine glasses, the reason being to allow the aromas to emerge.

vino bellezza *lines*



VINTAGE



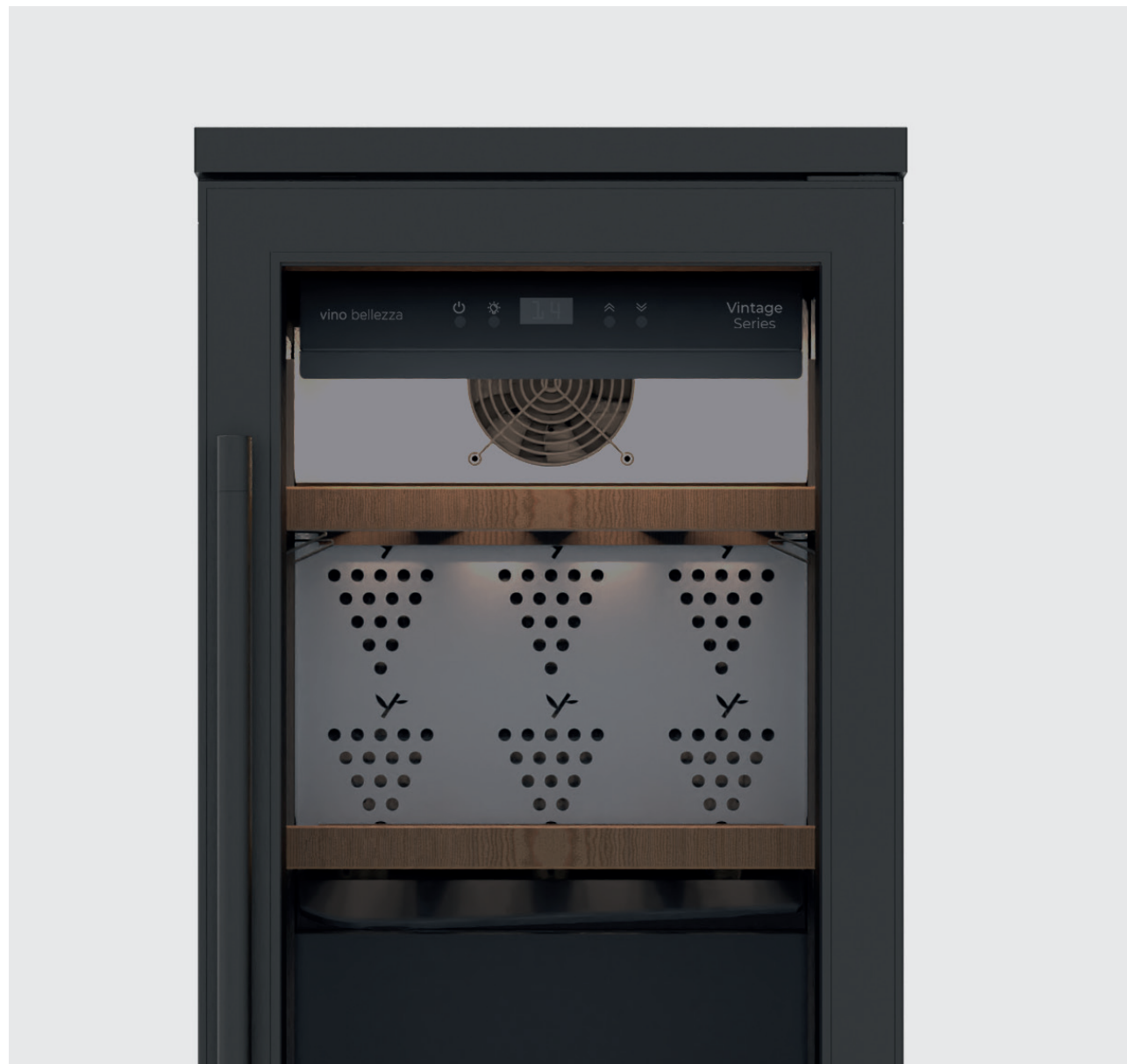
RESERVE



DECANTER

VINTAGE LINE

As its name suggests, the Vino Bellezza Vintage line features timeless products that get better with age. The Vintage wine coolers are designed for wine lovers who are newcomers to the enchanting world of wines. If you treat yourself to around 10 bottles of wine a month, then the Vintage line is just for you. The Vintage series boasts the full range of Vino Bellezza wine cooler features from UV protection glass doors, a digital thermostat, control panel, and natural pine wood shelving. The interiors are made from double-coated galvanized metal resistant to corrosion.







VINTAGE 18

Vintage 18 is designed for under-counter use to save space. Vintage 18 wine coolers have a net capacity of 18 bottles (98 litres), making it ideal for new wine lovers.





VINTAGE 21

Vintage 21 is an under-counter wine cooler that is easy to fit in kitchens thanks to its compact design. Featuring a capacity of 21 bottles (125 litres), Vintage 21 is designed for those who have a growing passion for wine.



VINTAGE 31

Vintage 31 has the widest dimensions in the Vintage line, offering a capacity of 31 bottles (163 litres). Vintage 31 is sure to impress with its ample capacity as your wine collection grows.





VINTAGE 56

The sleek Vintage 56 wine cooler boasts the smallest footprint in the series, allowing for easy placement in any space. Able to hold a wine collection of 56 bottles (170 litres), Vintage 56 is the choice for wine lovers with tight spaces.



VINTAGE 63

Vintage 63 stands out with its height of 191 cm as the tallest wine cooler in the series. Vintage 63 can cool up to 63 bottles (226 litres). Vintage 63 is a perfect choice for wine lovers who are looking for a well-balanced range of features in a wine cooler.





VINTAGE 81

Our flagship Vintage 81 wine cooler in the Vintage line is designed for wine aficionados who want to reach the ultimate level in wine collecting. Boasting ample space for 81 bottles (325 litres), Vintage 81 is designed to store your wine collection in its entirety.

VINTAGE

TECHNICAL
SPECIFICATIONS

18



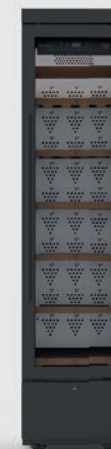
21



31



56



63



81

| | | | | | | |
|---|---------------------|---------------------|---------------------|---------------------|---------------------|---------------------|
| Gross Volume (Lt.) | 104 | 134 | 183 | 195 | 238 | 333 |
| Net Volume (Lt.) | 98 | 125 | 163 | 170 | 226 | 325 |
| Internal Dimensions (w*d*h) (mm) | 355x456x686 | 490x466x670 | 806x399x670 | 357x363x1410 | 355x465x1442 | 490x465x1555 |
| External Dimensions (w*d*h) (mm) | 455x650x853 | 591x666.5x853 | 906x554x853 | 435x554x1862.5 | 455x663x1912 | 590x663x1885 |
| Packaged Dimensions (w*d*h) (mm) | 470x680x960 | 611x690x940 | 926x574x950 | 450x587x1983.5 | 470x700x2036 | 605x697x2009 |
| Net Weight (Kg) | 39 | 56 | 77.25 | 73 | 90 | 92 |
| Gross Weight (Kg) | 45 | 62 | 82.5 | 79 | 98 | 97.5 |
| Footprint (m2) | 0.295 | 0.395 | 0.503 | 0.242 | 0.303 | 0.393 |
| Bottle Capacity | 18 | 21 | 31 | 56 | 63 | 81 |
| Cooling Range (°C) | +5 / +18 °C | +5 / +18 °C | +5 / +18 °C | +5 / +18 °C | +5 / +18 °C | +5 / +18 °C |
| Cooling Gas | R134a/R600a | R134a/R600a | R134a/R600a | R134a/R600a | R134a/R600a | R134a/R600a |
| Climate Class | B/C (R134a/R600a) | B/C (R134a/R600a) | B/C (R134a/R600a) | B/C (R134a/R600a) | B/C (R134a/R600a) | B/C (R134a/R600a) |
| Supply Voltage | 220-240 / 50 V/Hz | 220-240 / 50 V/Hz | 220-240 / 50 V/Hz | 220-240 / 50 V/Hz | 220-240 / 50 V/Hz | 220-240 / 50 V/Hz |
| LED Lighting | Yes | Yes | Yes | Yes | Yes | Yes |
| 4 Wheels | Yes | Yes | Yes | Yes | Yes | Yes |
| 2 Adjustable Feet | Yes | Yes | Yes | Yes | Yes | Yes |
| Door Type | Aluminium | Aluminium | Aluminium | Aluminium | Aluminium | Aluminium |
| Display | Digital Key Display | Digital Key Display | Digital Key Display | Digital Key Display | Digital Key Display | Digital Key Display |
| Alarm Signal (Open Door/High Temperature) | No | No | No | No | No | No |
| Shelf Type | Pine Wood | Pine Wood | Pine Wood | Pine Wood | Pine Wood | Pine Wood |
| Shelf Quantity | 3 | 3 | 5 | 5 | 5 | 5 |
| Energy Class | E | E | F | G | G | E |



RESERVE LINE

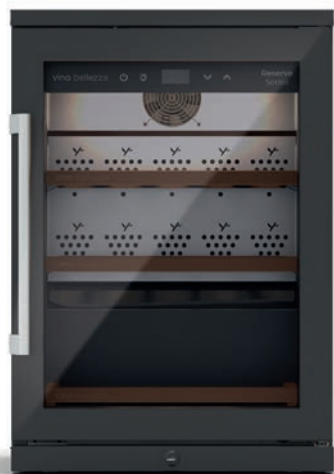
If wine collecting has become your lifestyle and you're ready to take your collection to the next level, then look no further than the Vino Bellezza Reserve line. The Reserve line consists of six different models for wine lovers who read every wine article they find, care about the quality of wine and consume around 10-15 bottles a month. Equipped with signature Vino Bellezza features including UV protection glass doors, a digital thermostat, control panel, and natural pine wood shelves the interiors of Reserve wine coolers are made from doublecoated galvanized metal resistant to corrosion, offering durability and hygiene in one.





RESERVE 18

Reserve 18, the smallest model in the Reserve line, is an under-counter wine cooler. Featuring an 18-bottle (98 litres) capacity, Reserve 18 is well-suited for wine lovers who are looking to invest in a mid-range wine cooler.



RESERVE 21

If you've started to develop a serious love for wine, then Reserve 21 is an under-counter wine cooler just for you. Offering a capacity of 21 bottles (125 litres), Reserve 21 is designed to meet the needs of wine lovers.





RESERVE 31

Featuring a capacity of 31 bottles, Vino Bellezza's two-door model Reserve 31 comes to the rescue of wine lovers whose list of wines to be tasted keeps getting longer and longer. Offering the widest dimensions in this series, Reserve 31 can take up a net volume of 163 litres.



RESERVE 56

Choosing where to place your wine cooler is easy with Reserve 56 thanks to its sleek design that comes with a minimal footprint. Reserve 56 can hold up to 56 bottles (170 litres), allowing you to display your wine collection wherever you want.





RESERVE 63

Reserve 63 is the tallest model in the Reserve series, offering ample space to store up to 63 bottles. Reserve 63 has a net capacity of 226 litres, ideal for wine lovers looking for a mid-range wine cooler.



RESERVE 81

Reserve 81, the grandest member of the Reserve family, is an ideal choice for wine lovers who are not yet ready to go to the ultimate level. Boasting a gigantic capacity of 81 bottles (325 litres), Reserve 81 will no doubt make many wine lovers happy.



RESERVE

TECHNICAL SPECIFICATIONS



| | 18 | 21 | 31 | 56 | 63 | 81 |
|---|-----------------------|-----------------------|-----------------------|-----------------------|-----------------------|-----------------------|
| Gross Volume (Lt.) | 104 | 134 | 183 | 195 | 238 | 333 |
| Net Volume (Lt.) | 98 | 125 | 163 | 170 | 226 | 325 |
| Internal Dimensions (w*d*h) (mm) | 355x456x686 | 490x466x670 | 806x399x670 | 357x363x1410 | 355x465x1442 | 490x465x1555 |
| External Dimensions (w*d*h) (mm) | 455x667x853 | 591x688x853 | 906x576x853 | 435x575x1862.5 | 455x685x1912 | 590x685x1885 |
| Packaged Dimensions (w*d*h) (mm) | 470x703x960 | 611x710x940 | 926x696x950 | 450x607x1983.5 | 479x718x2036 | 605x718x2009 |
| Net Weight (Kg) | 39 | 56 | 77.25 | 73 | 90 | 92 |
| Gross Weight (Kg) | 45 | 62 | 82.5 | 79 | 98 | 97.5 |
| Footprint (m2) | 0.303 | 0.395 | 0.503 | 0.250 | 0.313 | 0.406 |
| Bottle Capacity | 18 | 21 | 31 | 56 | 63 | 81 |
| Cooling Range (°C) | +5 / +18 °C | +5 / +18 °C | +5 / +18 °C | +5 / +18 °C | +5 / +18 °C | +5 / +18 °C |
| Cooling Gas | R134a/R600a | R134a/R600a | R134a/R600a | R134a/R600a | R134a/R600a | R134a/R600a |
| Climate Class | B/C (R134a/R600a) | B/C (R134a/R600a) | B/C (R134a/R600a) | B/C (R134a/R600a) | B/C (R134a/R600a) | B/C (R134a/R600a) |
| Supply Voltage | 220-240 / 50 V/Hz | 220-240 / 50 V/Hz | 220-240 / 50 V/Hz | 220-240 / 50 V/Hz | 220-240 / 50 V/Hz | 220-240 / 50 V/Hz |
| LED Lighting | Yes | Yes | Yes | Yes | Yes | Yes |
| 4 Wheels | Yes | Yes | Yes | Yes | Yes | Yes |
| 2 Adjustable Feet | Yes | Yes | Yes | Yes | Yes | Yes |
| Door Type | Frameless (unframed) | Frameless (unframed) | Frameless (unframed) | Frameless (unframed) | Frameless (unframed) | Frameless (unframed) |
| Display | Digital Touch Display | Digital Touch Display | Digital Touch Display | Digital Touch Display | Digital Touch Display | Digital Touch Display |
| Alarm Signal (Open Door/High Temperature) | Yes | Yes | Yes | Yes | Yes | Yes |
| Shelf Type | Hornbeam | Hornbeam | Hornbeam | Hornbeam | Hornbeam | Hornbeam |
| Shelf Quantity | 3 | 3 | 5 | 5 | 5 | 5 |
| Energy Class | E | F | G | G | E | E |

DECANTER LINE

If wine is your red (or white or rosé) line and you won't settle for less than the best, then come and meet our Vino Bellezza Decanter line. If you know all of the wine literature by heart and treat yourself to around 20 to 30 bottles of wine a month, the time has come for you to choose an under-counter or freestanding Decanter wine cooler. All of the wine coolers in the Decanter line come with Vino Bellezza's signature features, including high-quality UV protection glass doors, a digital thermostat, control panel, and natural pine wood shelves. The stainless steel interior provides top-notch hygiene and durability as well as easy cleaning. All of the Decanter models come with frameless tinted glass doors, making them a stylish addition to your decoration.







DECANTER 18

Vino Bellezza proudly presents its premium line Decanter, available in different sizes starting with the under-counter model Decanter 18. Offering a capacity of 18 bottles (98 litres), Decanter 18 is designed for users who have newly unearthed their passion for wine and are not willing to compromise quality and style.





DECANTER 21

The premium Decanter 21 model is an under-counter wine cooler that can hold up to 21 bottles (125 litres). Decanter 21 is set to become a favourite among wine lovers looking for a compact, high-quality and sleek solution for their growing wine collection.



DECANTER 31

Decanter 31, the only two-door model available in the premium Decanter line, is a wine cooler for under-counter installation. Offering a capacity of 31 bottles (163 litres), Decanter 31 is the widest wine cooler in the Decanter series.





DECANTER 56

Decanter 56 takes up only a very small amount of space, making it easy to add it to your living spaces. Its sleek design makes it a decorative object in its own right, while offering ample space to store up to 56 bottles (170 litres).



DECANTER 63

Decanter 63, the tallest of the Decanter line, not only stores your wines but does it in style. Offering a capacity of 63 bottles (226 litres), Decanter 63 speaks to the ultimate wine lovers.





DECANTER 81

The epitome of Vino Bellezza quality and style, Decanter 81 is exclusively designed for wine aficionados who put wine front and centre in their life. Decanter 81 boasts a capacity of 81 bottles (325 litres), offering plenty of space to accommodate an extensive collection of wine.

DECANTER

TECHNICAL
SPECIFICATIONS

18



21



31



56



63



81

| | | | | | | |
|---|-----------------------|-----------------------|-----------------------|-----------------------|-----------------------|-----------------------|
| Gross Volume (Lt.) | 104 | 134 | 183 | 195 | 238 | 333 |
| Net Volume (Lt.) | 98 | 125 | 163 | 170 | 226 | 325 |
| Internal Dimensions (w*d*h) (mm) | 355x456x686 | 490x466x670 | 806x399x670 | 357x363x1410 | 355x465x1442 | 490x465x1555 |
| External Dimensions (w*d*h) (mm) | 455x667x853 | 591x688x853 | 906x576x853 | 435x575x1862.5 | 455x685x1912 | 590x685x1885 |
| Packaged Dimensions (w*d*h) (mm) | 470x703x960 | 611x710x940 | 926x696x950 | 450x607x1983.5 | 470x718x2036 | 605x718x2009 |
| Net Weight (Kg) | 39 | 56 | 77.25 | 73 | 90 | 92 |
| Gross Weight (Kg) | 45 | 62 | 82.5 | 79 | 98 | 97.5 |
| Footprint (m2) | 0.303 | 0.395 | 0.503 | 0.250 | 0.313 | 0.406 |
| Bottle Capacity | 18 | 21 | 31 | 56 | 63 | 81 |
| Cooling Range (°C) | +5 / +18 °C | +5 / +18 °C | +5 / +18 °C | +5 / +18 °C | +5 / +18 °C | +5 / +18 °C |
| Cooling Gas | R134a/R600a | R134a/R600a | R134a/R600a | R134a/R600a | R134a/R600a | R134a/R600a |
| Climate Class | B/C (R134a/R600a) | B/C (R134a/R600a) | B/C (R134a/R600a) | B/C (R134a/R600a) | B/C (R134a/R600a) | B/C (R134a/R600a) |
| Supply Voltage | 220-240 / 50 V/Hz | 220-240 / 50 V/Hz | 220-240 / 50 V/Hz | 220-240 / 50 V/Hz | 220-240 / 50 V/Hz | 220-240 / 50 V/Hz |
| LED Lighting | Yes | Yes | Yes | Yes | Yes | Yes |
| 4 Wheels | Yes | Yes | Yes | Yes | Yes | Yes |
| 2 Adjustable Feet | Yes | Yes | Yes | Yes | Yes | Yes |
| Door Type | Stainless | Stainless | Stainless | Stainless | Stainless | Stainless |
| Display | Digital Touch Display | Digital Touch Display | Digital Touch Display | Digital Touch Display | Digital Touch Display | Digital Touch Display |
| Alarm Signal (Open Door/High Temperature) | Yes | Yes | Yes | Yes | Yes | Yes |
| Shelf Type | Hornbeam | Hornbeam | Hornbeam | Hornbeam | Hornbeam | Hornbeam |
| Shelf Quantity | 3 | 3 | 5 | 5 | 5 | 5 |
| Energy Class | E | F | G | G | E | E |





CUSTOM DESIGN

Want to have a custom designed wine cooler? Choose from our range of available colours and materials for any high volume orders you may have.



vino bellezza

Istanbul Office

Balmumcu, Barbaros Bulvarı
72/2 34349 Beşiktaş,
İstanbul/TÜRKİYE

T +90 212 272 15 95

G +90 533 281 52 29

Factory

M.O.S.B 4. Kısım Ahmet
Nazif Zorlu Bulvarı No:32
Manisa/TÜRKİYE

T +90 236 213 1 212 (PBX)

F +90 236 213 1 208

www.vinobellezza.com
info@vinobellezza.com

@ f t in vinobellezza